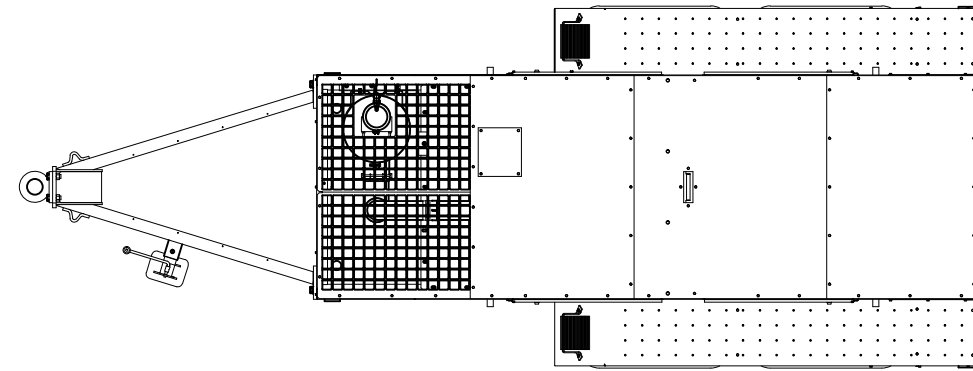
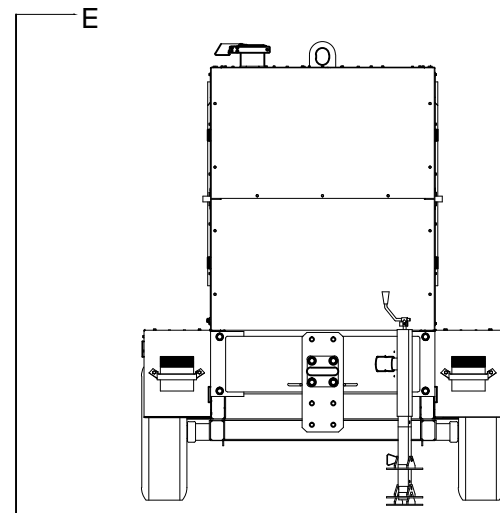


REV	DESCRIPTION	ECN#	DWN	APVD	DATE
1	PRELIMINARY DRAWING	3801	DMP	ACH	21NOV14

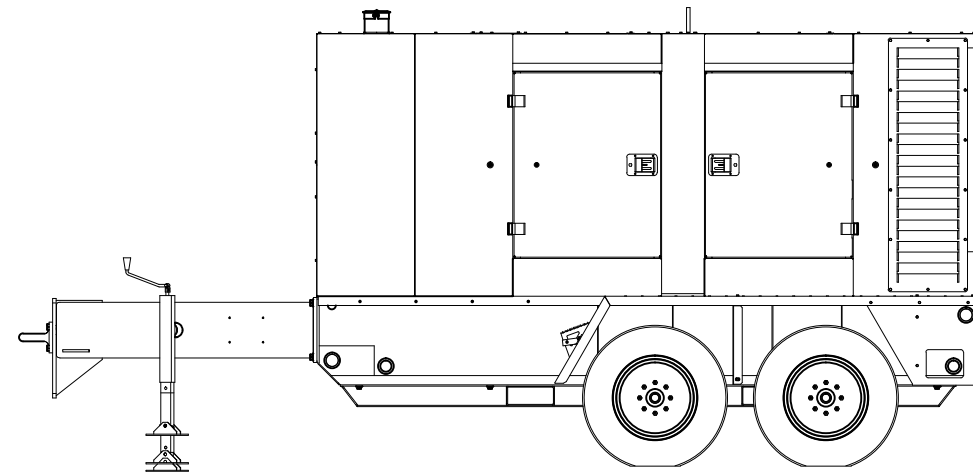


VIEW B
SEE SHEET 3 FOR ENLARGED VIEW

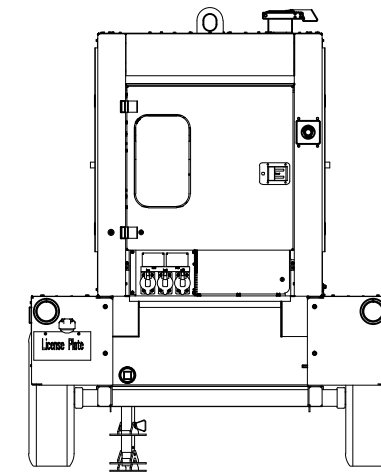


VIEW C
SEE SHEET 4 FOR ENLARGED VIEW

5
A3

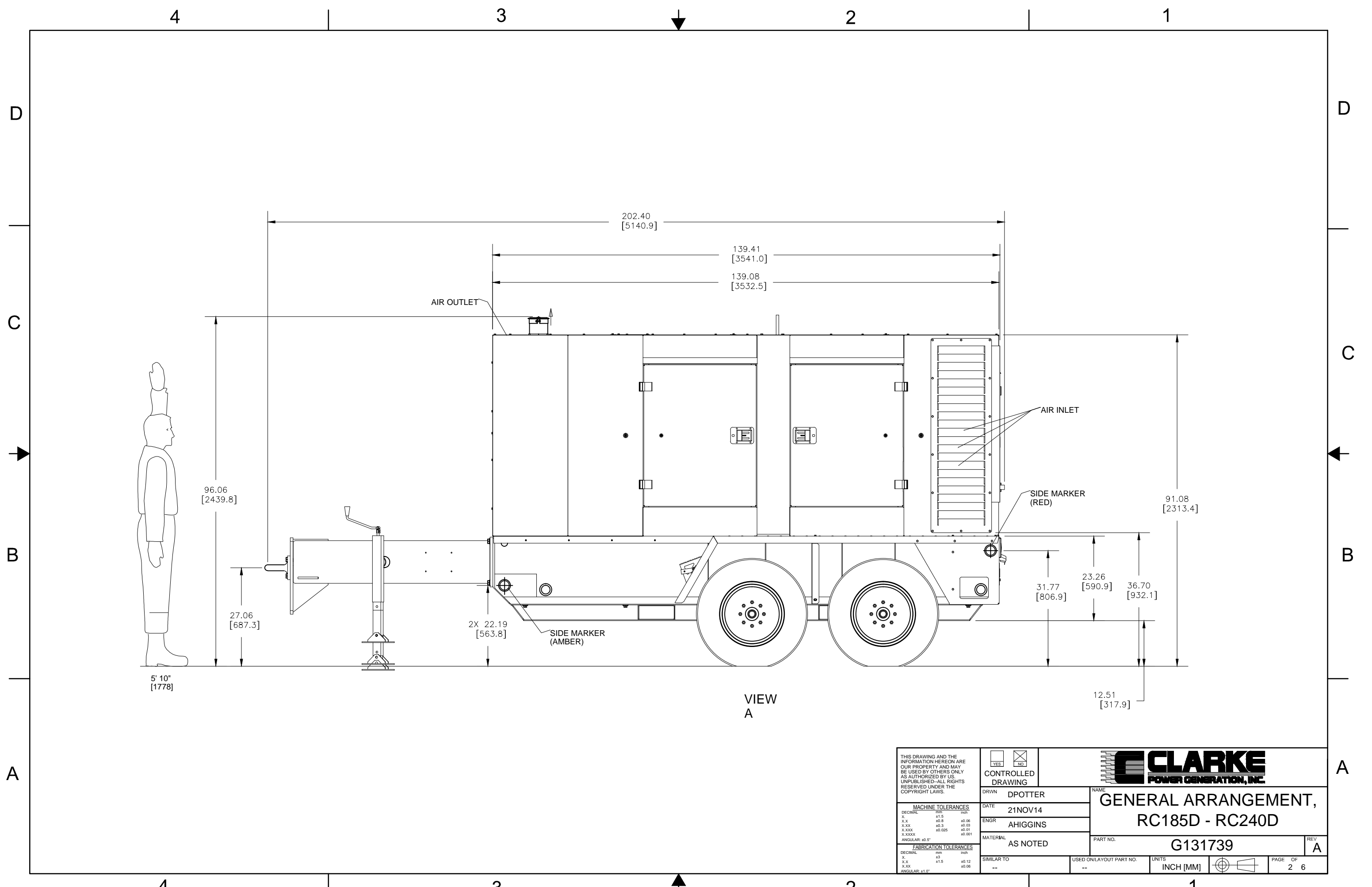


VIEW A
SEE SHEET 2 FOR ENLARGED VIEW

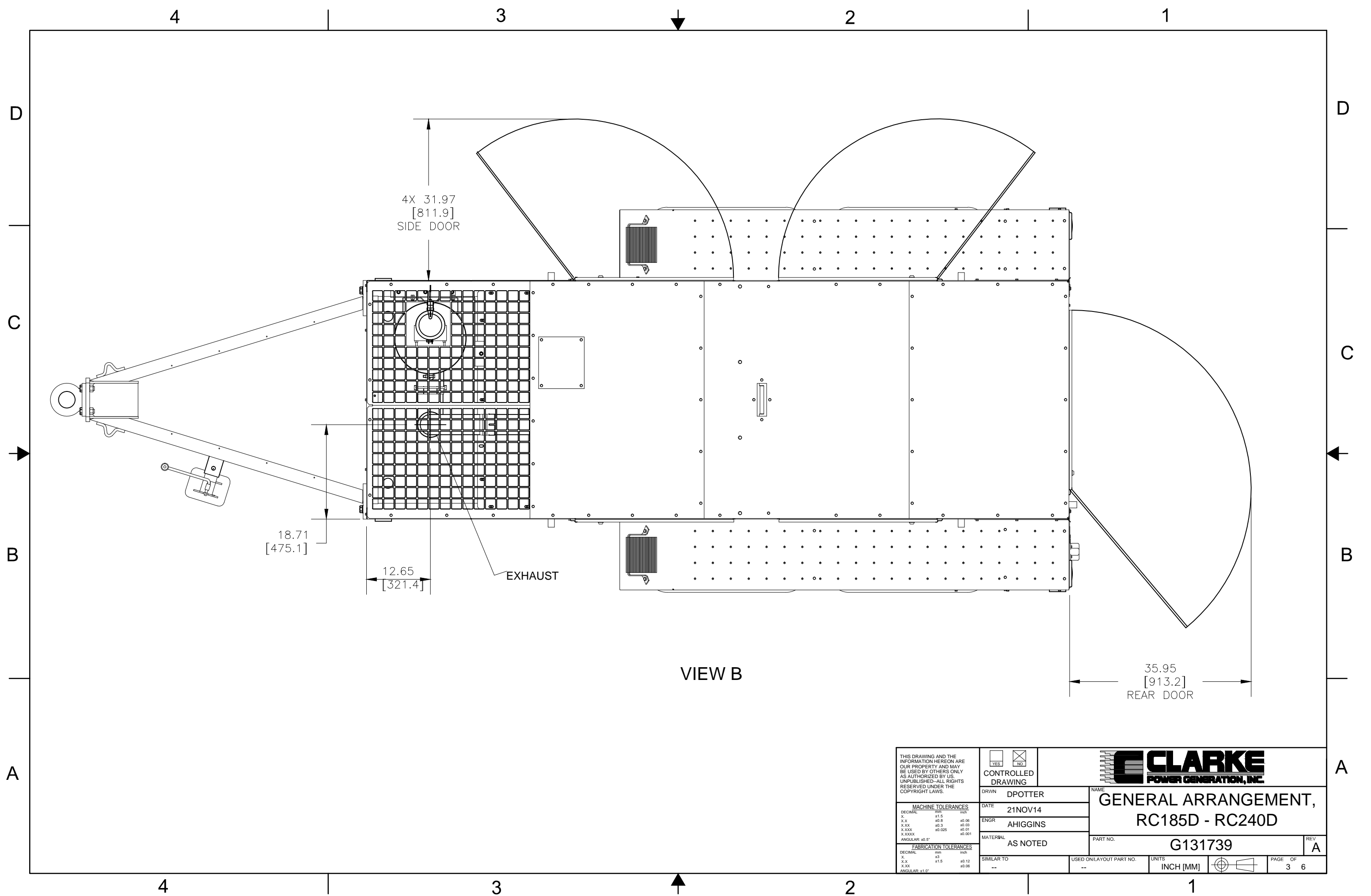


VIEW D
SEE SHEET 4 FOR ENLARGED VIEW

THIS DRAWING AND THE INFORMATION HEREON ARE OUR PROPERTY AND MAY BE USED BY OTHERS ONLY AS AUTHORIZED BY US. UNPUBLISHED-ALL RIGHTS RESERVED UNDER THE COPYRIGHT LAWS.		<input type="checkbox"/> YES <input checked="" type="checkbox"/> NO CONTROLLED DRAWING		NAME GENERAL ARRANGEMENT, RC185D - RC240D	
MACHINE TOLERANCES DECIMAL mm inch X. ±1.5 ±0.06 X.X ±0.8 ±0.03 X.XX ±0.3 ±0.01 X.XXX ±0.025 ±0.001 ANGULAR: ±0.5°		DRWN DPOTTER DATE 21NOV14 ENGR AHIGGINS		PART NO. G131739	
FABRICATION TOLERANCES DECIMAL mm inch X. ±3 ±0.12 X.X ±1.5 ±0.08 ANGULAR: ±1.0°		MATERIAL AS NOTED SIMILAR TO --	USED ONLY LAYOUT PART NO. --	UNITS INCH [MM]	REV A PAGE 1 OF 6



THIS DRAWING AND THE INFORMATION HEREON ARE OUR PROPERTY AND MAY BE USED BY OTHERS ONLY AS AUTHORIZED BY US. UNPUBLISHED-ALL RIGHTS RESERVED UNDER THE COPYRIGHT LAWS.		<input type="checkbox"/> YES <input checked="" type="checkbox"/> NO CONTROLLED DRAWING		
MACHINE TOLERANCES DECIMAL mm inch . . ±1.5 ±0.06 .XX ±0.8 ±0.03 .XXX ±0.3 ±0.01 .XXXX ±0.025 ±0.001 .XXXXX ±0.01 ±0.001 ANGULAR: ±0.5°		DRWN DPOTTER DATE 21NOV14 ENGR AHIGGINS		NAME GENERAL ARRANGEMENT, RC185D - RC240D
FABRICATION TOLERANCES DECIMAL mm inch . . ±3 ±1.5 ±0.12 .XX ±1.5 ±0.08 .XXX ±1.0 ±0.08 ANGULAR: ±1.0°		MATERIAL AS NOTED SIMILAR TO --	PART NO. G131739 REV A	
		USED ONLY LAYOUT PART NO. --	UNITS INCH [MM]	PAGE OF 2 6



THIS DRAWING AND THE INFORMATION HEREON ARE OUR PROPERTY AND MAY BE USED BY OTHERS ONLY AS AUTHORIZED BY US. UNPUBLISHED-ALL RIGHTS RESERVED UNDER THE COPYRIGHT LAWS.

YES NO
CONTROLLED DRAWING

DRWN DPOTTER
DATE 21NOV14
ENGR AHIGGINS
MATERIAL AS NOTED
SIMILAR TO --

NAME
CLARKE
POWER GENERATION, INC.
GENERAL ARRANGEMENT,
RC185D - RC240D
PART NO. G131739
REV A

USED ON LAYOUT PART NO. --
UNITS INCH [MM]
PAGE OF 3 6

4

3

2

1

D

D

C

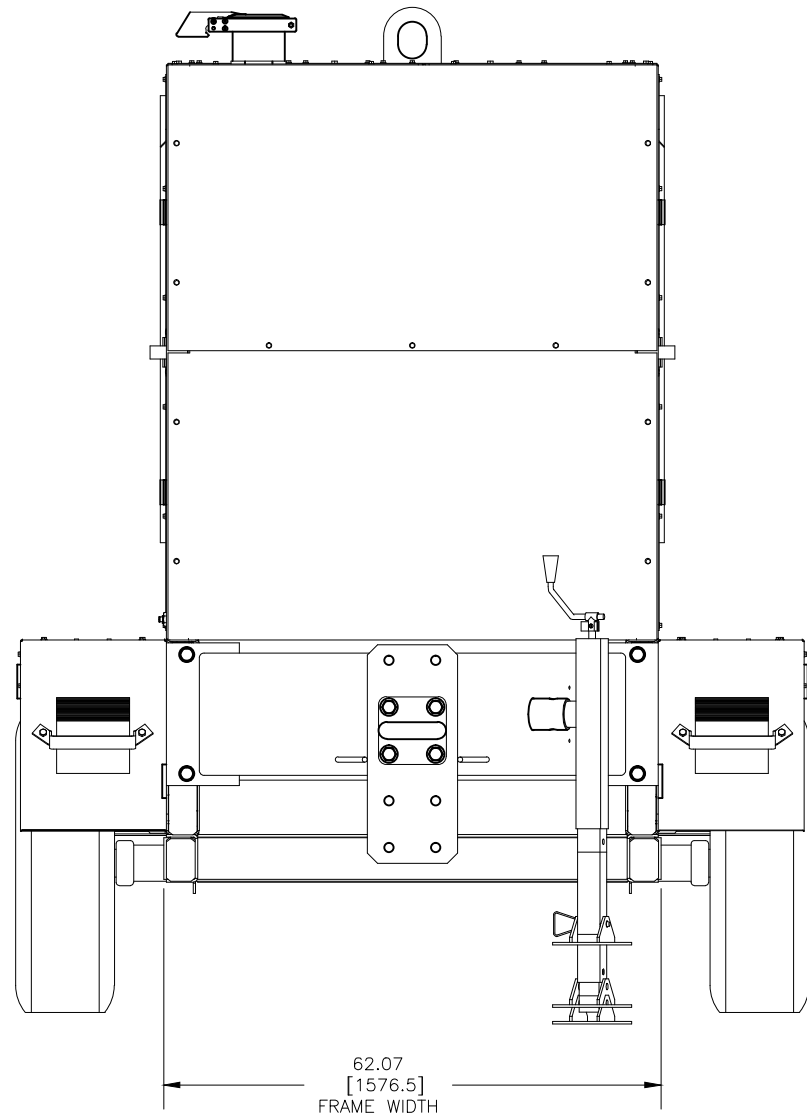
C

B

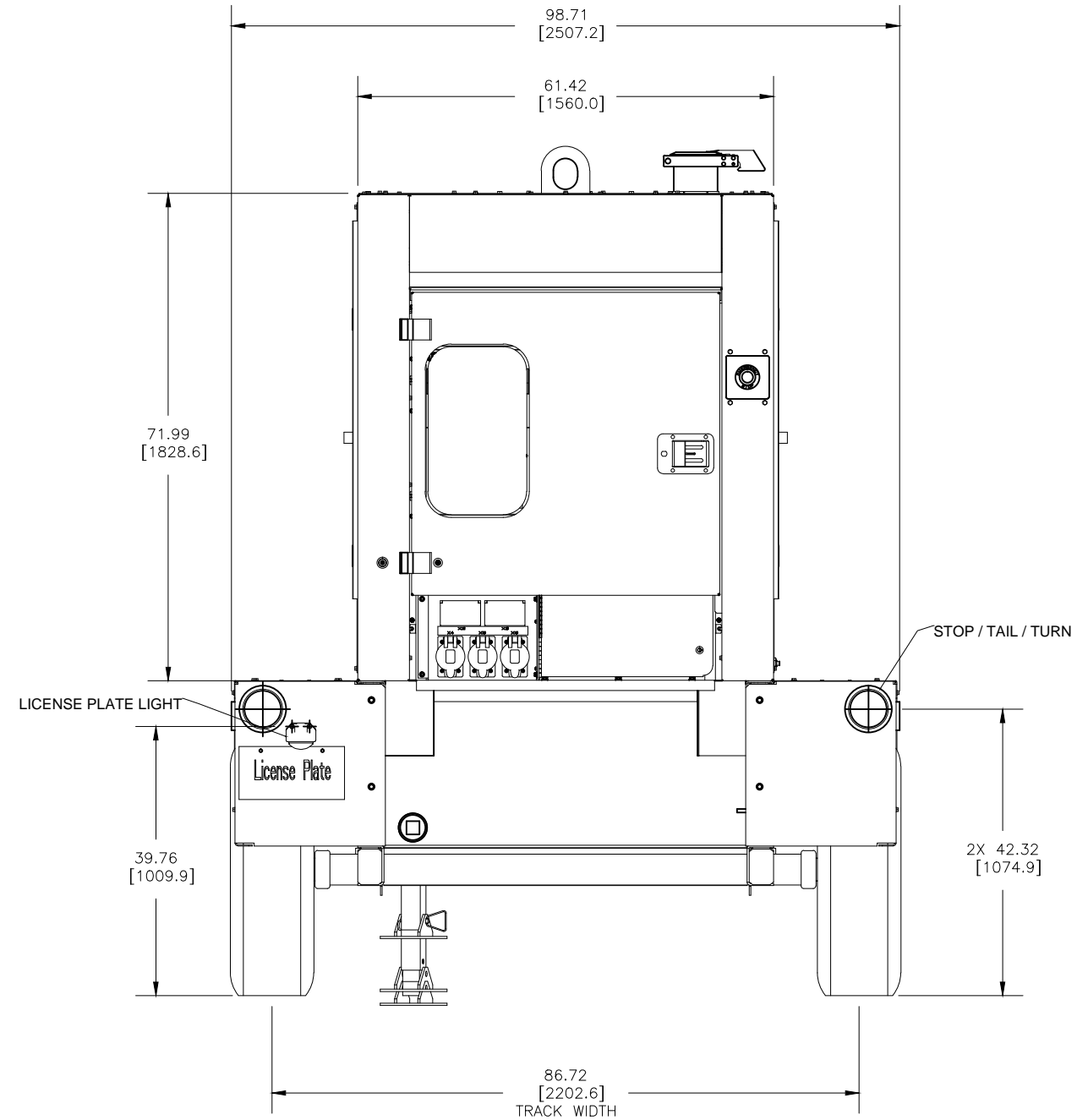
B

A

A

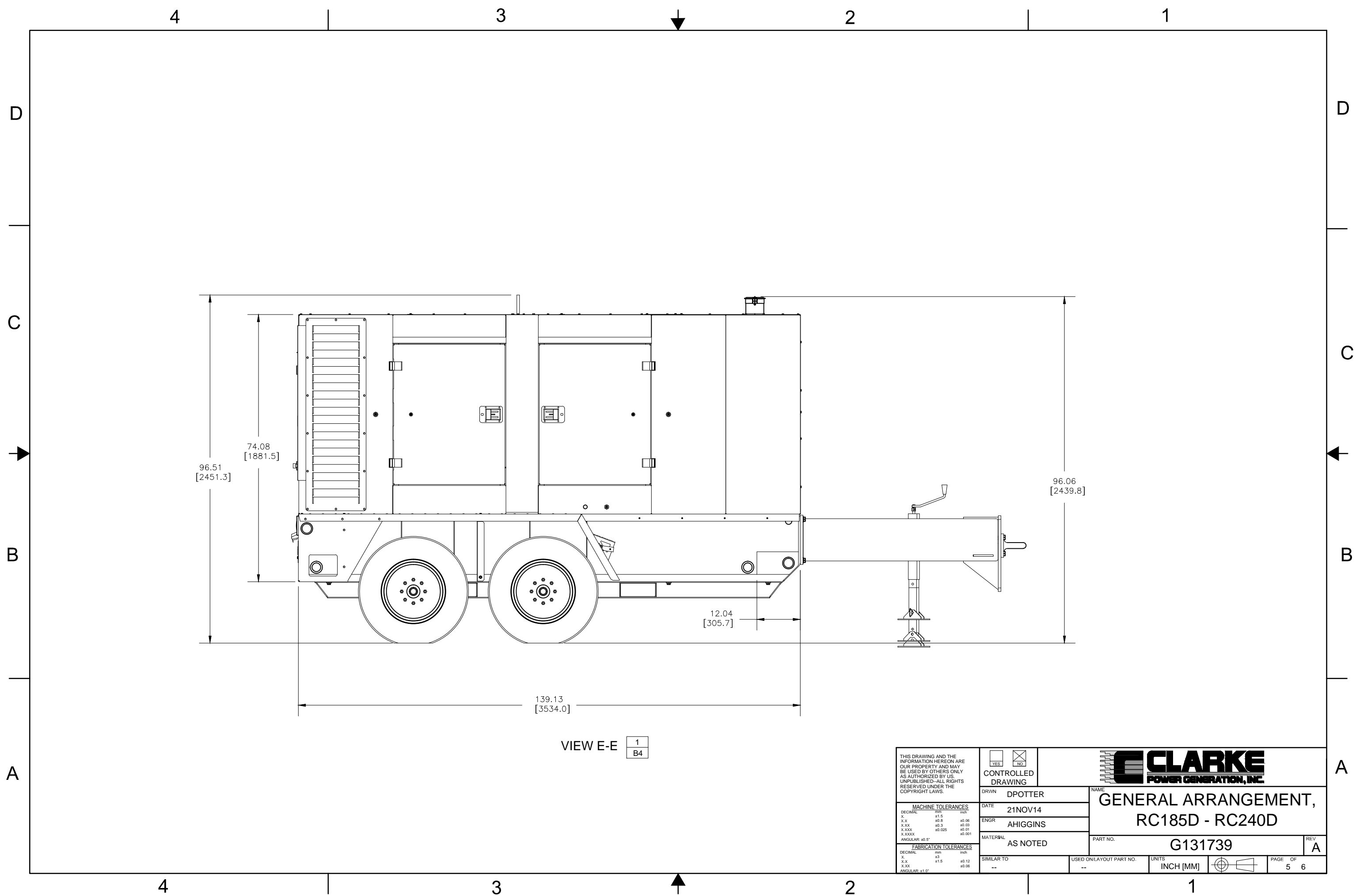


VIEW C



VIEW D

THIS DRAWING AND THE INFORMATION HEREON ARE OUR PROPERTY AND MAY BE USED BY OTHERS ONLY AS AUTHORIZED BY US. UNPUBLISHED-ALL RIGHTS RESERVED UNDER THE COPYRIGHT LAWS.		<input type="checkbox"/> YES <input checked="" type="checkbox"/> NO CONTROLLED DRAWING		
MACHINE TOLERANCES DECIMAL mm inch X. ±1.5 ±0.06 X.X ±0.8 ±0.03 X.XX ±0.3 ±0.01 X.XXX ±0.025 ±0.001 X.XXXX ±0.001 ANGULAR: ±0.5°	DRWN DPOTTER DATE 21NOV14 ENGR AHIGGINS	NAME GENERAL ARRANGEMENT, RC185D - RC240D		
FABRICATION TOLERANCES DECIMAL mm inch X. ±3 ±1.2 X.X ±1.5 ±0.08 X.XX ±1.5 ±0.08 ANGULAR: ±1.0°	MATERIAL AS NOTED SIMILAR TO --	PART NO. G131739	REV A	
		USED ON LAYOUT PART NO. --	UNITS INCH [MM]	PAGE OF 4 6



VIEW E-E 1
B4

THIS DRAWING AND THE INFORMATION HEREON ARE OUR PROPERTY AND MAY BE USED BY OTHERS ONLY AS AUTHORIZED BY US. UNPUBLISHED-ALL RIGHTS RESERVED UNDER THE COPYRIGHT LAWS.		<input type="checkbox"/> YES <input checked="" type="checkbox"/> NO CONTROLLED DRAWING	
DRWN	DPOTTER	NAME	
DATE	21NOV14	ENGR	AHIGGINS
MACHINE TOLERANCES		MATERIAL	PART NO.
DECIMAL	mm	inch	G131739
X	±1.5	±0.06	REV
X.X	±0.8	±0.03	A
X.XX	±0.3	±0.01	
X.XXX	±0.025	±0.001	
X.XXXX	±0.005	±0.0001	
ANGULAR	±0.5°		
FABRICATION TOLERANCES		SIMILAR TO	USED ON LAYOUT PART NO.
DECIMAL	mm	inch	
X	±3	±1.2	
X.X	±1.5	±0.6	
X.XX	±0.75	±0.3	
ANGULAR	±1.0°		
		UNITS	PAGE OF
		INCH [MM]	5 6

4 3 2 1

D

D

C

C

B

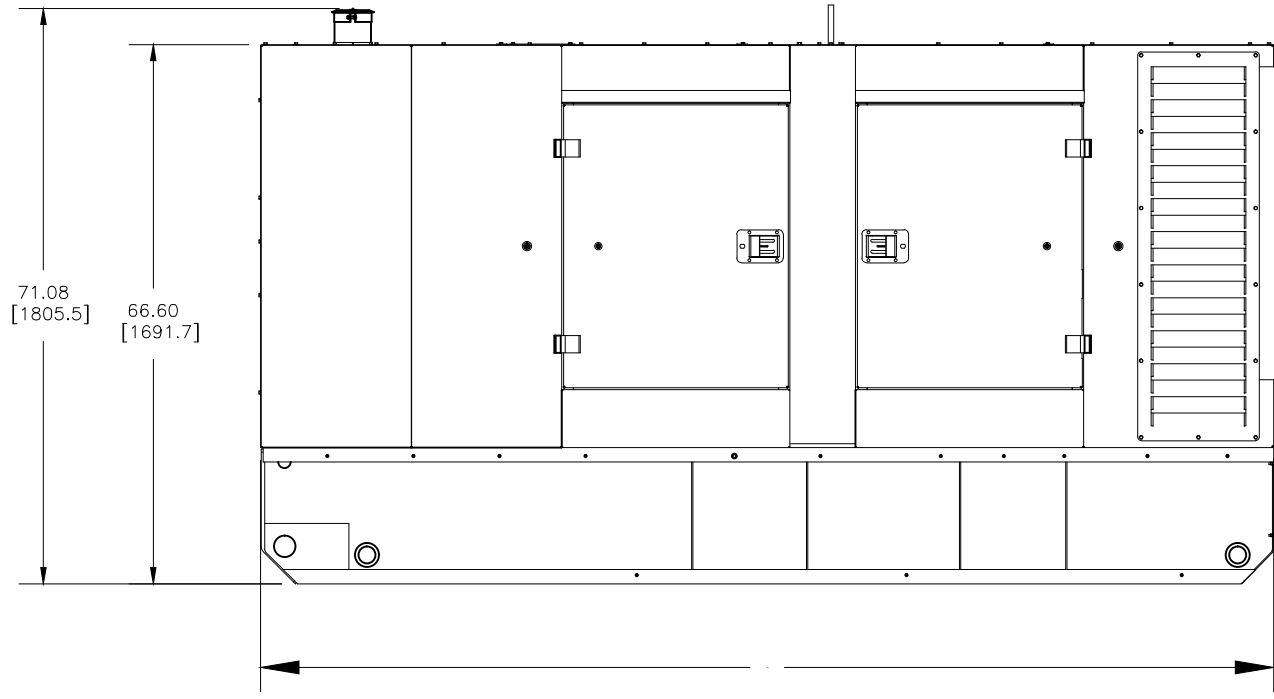
B

B

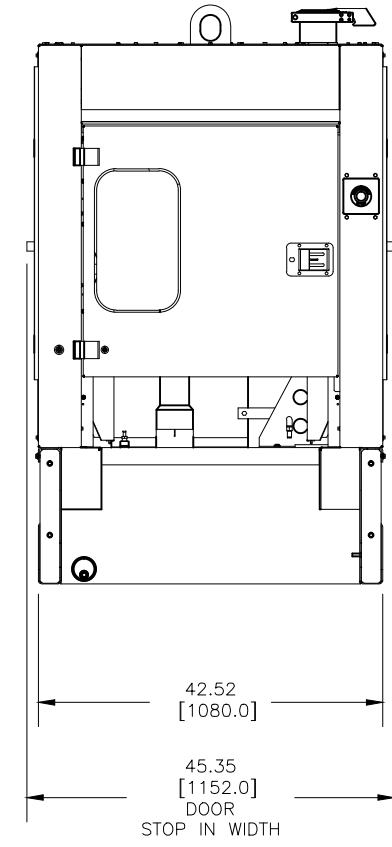
B

A

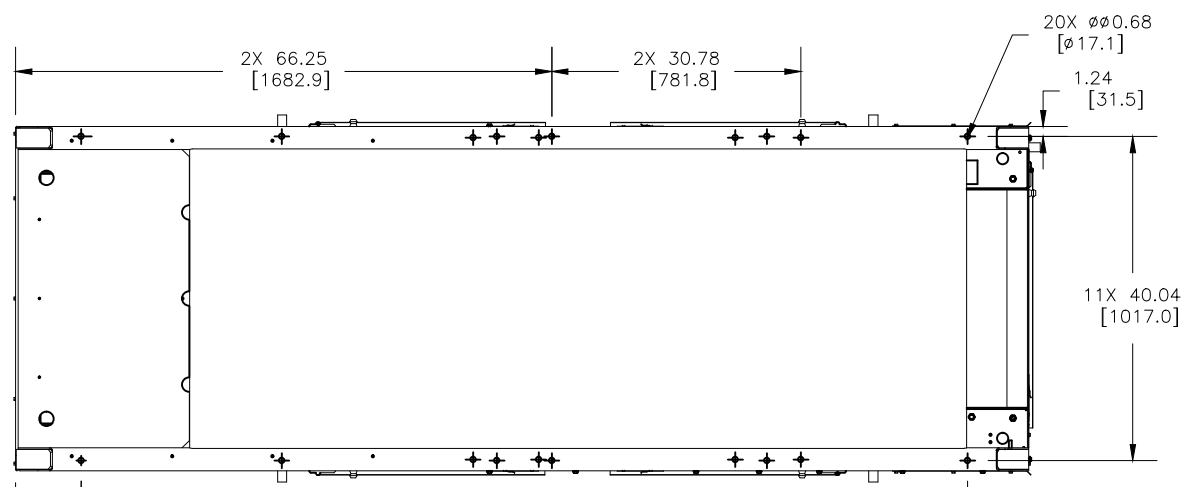
A



LESS RUNNING GEAR OPTION
(LEFT VIEW)



LESS RUNNING GEAR OPTION
(CONTROLS VIEW)



LESS RUNNING GEAR OPTION
(BOTTOM VIEW)

4 3 2 1

THIS DRAWING AND THE INFORMATION HEREON ARE OUR PROPERTY AND MAY BE USED BY OTHERS ONLY AS AUTHORIZED BY US. UNPUBLISHED-ALL RIGHTS RESERVED UNDER THE COPYRIGHT LAWS.		<input type="checkbox"/> YES <input checked="" type="checkbox"/> NO CONTROLLED DRAWING	
MACHINE TOLERANCES DECIMAL mm inch . . ±1.5 ±0.06 .XX ±0.8 ±0.03 .XXX ±0.3 ±0.01 .XXXX ±0.025 ±0.001 .XXXXX ±0.01 ±0.001 ANGULAR: ±0.5°		DRWN DPOTTER DATE 21NOV14 ENGR AHIGGINS MATERIAL AS NOTED	NAME GENERAL ARRANGEMENT, RC185D - RC240D PART NO. G131739 REV A
FABRICATION TOLERANCES DECIMAL mm inch . . ±3 ±1.2 .XX ±1.5 ±0.12 .XXX ±0.75 ±0.08 ANGULAR: ±1.0°		SIMILAR TO -- USED ON LAYOUT PART NO. -- UNITS INCH [MM]	PAGE OF 6 6