

COMPOSITE OUTLINE FOR **ASCO** SERIES (G300, G386) 2600 - 3000 AMPERE TRANSFER SWITCHES

GENERAL NOTES

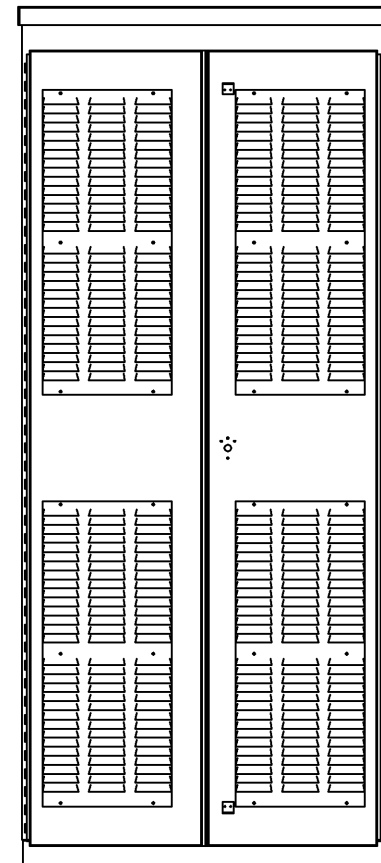
- TYPE 3R RAINPROOF ENCLOSURE. FREE STANDING. FLOOR MOUNTED. 12 GAUGE FORMED FRAME CONSTRUCTION.
- NEC STANDARD GAUGE PAN TYPE DOOR WITH LOCKABLE HANDLE.
- FINISH: ANSI 61 GRAY, POLYESTER POWDER STANDARD. OTHER ANSI COLORS AVAILABLE CONSULT FACTORY UL RECOGNIZED.
- CONSTRUCTION IS IN ACCORDANCE WITH APPLICABLE REQUIREMENTS OF UL 1008.
- RECOMMENDED CLEARANCES:
FRONT: 36 INCHES
REAR: 30 INCHES
- UNIT IS DESIGNED FOR BOTTOM CABLE ENTRY ONLY. THE STANDARD SWITCH CONFIGURATION IS FOR TOP LUGS EMERGENCY CENTER LUGS LOAD AND BOTTOM LUGS NORMAL. OPTIONALLY, THE SWITCH MAY BE SUPPLIED WITH REVERSE NORMAL & EMERGENCY. (REFER TO THE WIRING DIAGRAM FURNISHED WITH EACH TRANSFER SWITCH TO DETERMINE TERMINATION POSITIONS).
- A FULL RATED NEUTRAL CONNECTION FOR EACH SOURCE AND THE LOAD IS OPTIONAL. WHEN PROVIDED IT IS IN ONE OF THE FOLLOWING FORMATS AS SPECIFIED BY THE CATALOG NO. NEUTRAL TYPE;
A. SOLID (COPPER BUS) NEUTRAL (STANDARD)
B. SWITCHED NEUTRAL POLE (OPTIONAL)
- NO KNOCKOUTS ARE PROVIDED.
- EXTERIOR VENTS ARE SUPPLIED WITH POLYESTER DUST FILTERS.

CABLING NOTES

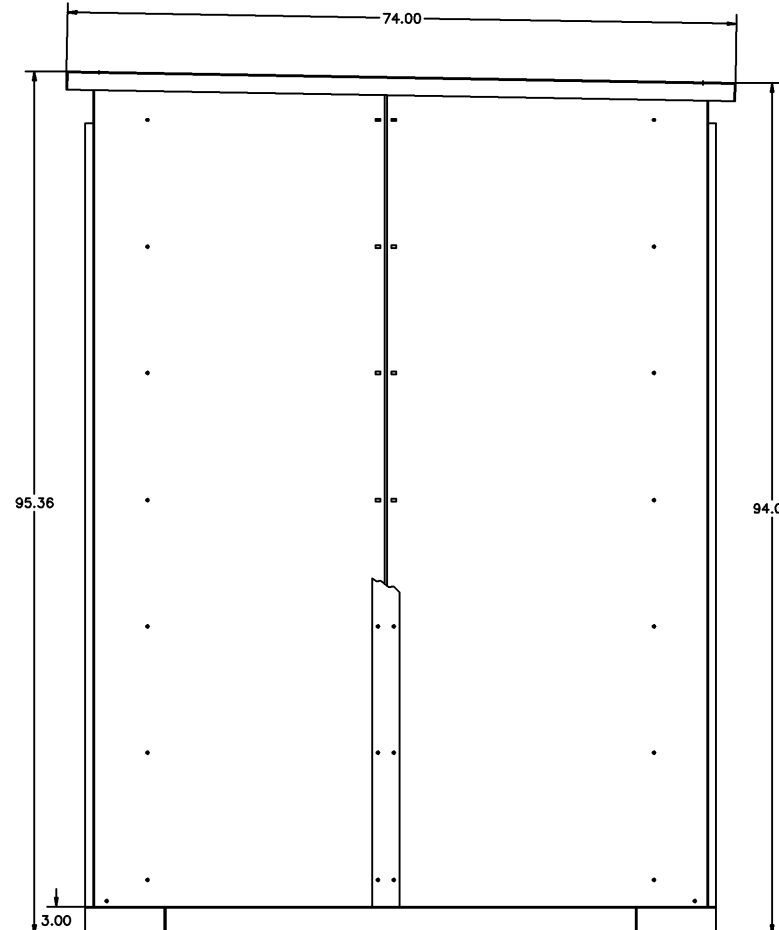
- ALL SIZES SUPPLIED STANDARD WITH MECHANICAL (SCREW TYPE) LUGS. (SEE AMP SIZE BELOW)
A. LUG MATERIAL: ALUMINUM ALLOY 6061-T6 WITH ELECTRO TIN PLATED FINISH.
B. SCREW MATERIAL: ALUMINUM ALLOY 6262-T9 WITH ELECTRO TIN PLATED FINISH.
C. UL LISTED, CSA CERTIFIED.
D. LUG SCREW TIGHTENING TORQUE PER UL 486B: 19 FT-LBS.
E. SUITABLE WIRE BENDING SPACE IS PROVIDED. (SEE AMP SIZE BELOW)
- CONSULT FACTORY FOR OTHER TERMINATION REQUIREMENTS.

NOTES 2600-3000 AMPS

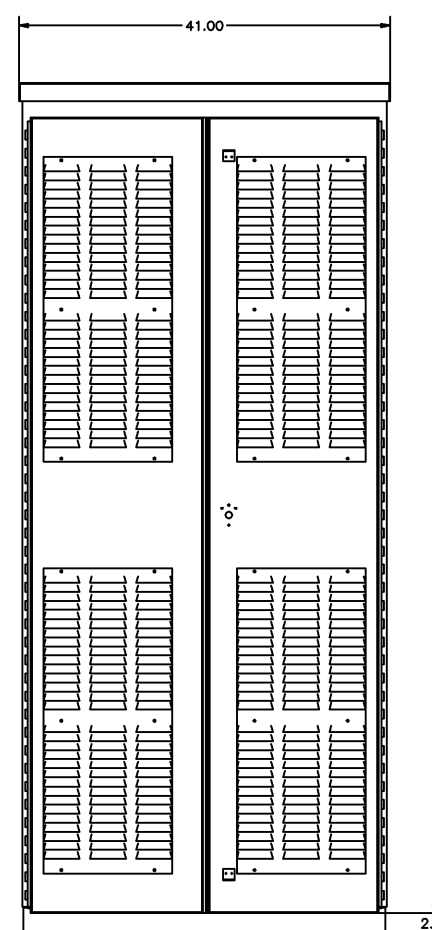
- SUPPLIED WITH STANDARD MECHANICAL (SCREW TYPE) LUGS ON THE NORMAL, EMERGENCY & LOAD BUS STABS. TWO (2) LUG PER PHASE AND NEUTRAL EACH SUITABLE FOR CONNECTION OF TWELVE (12) 1/0 -750MCM CU/AL CABLE (SEE NOTE "E" BELOW).
E. SUITABLE WIRE BENDING SPACE IS PROVIDED FOR UP TO TWELVE (12) 750MCM CABLES PER TERMINAL PER NEC.



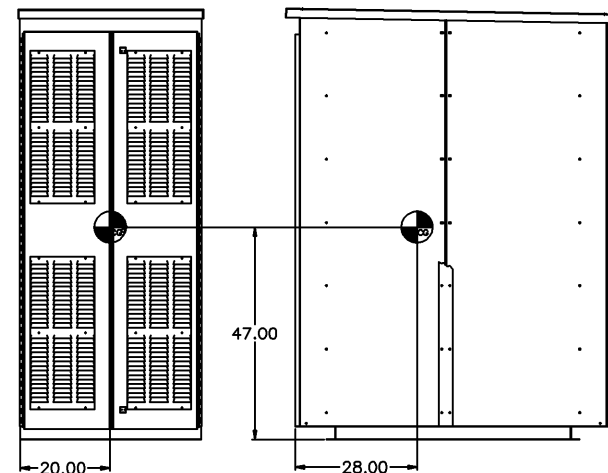
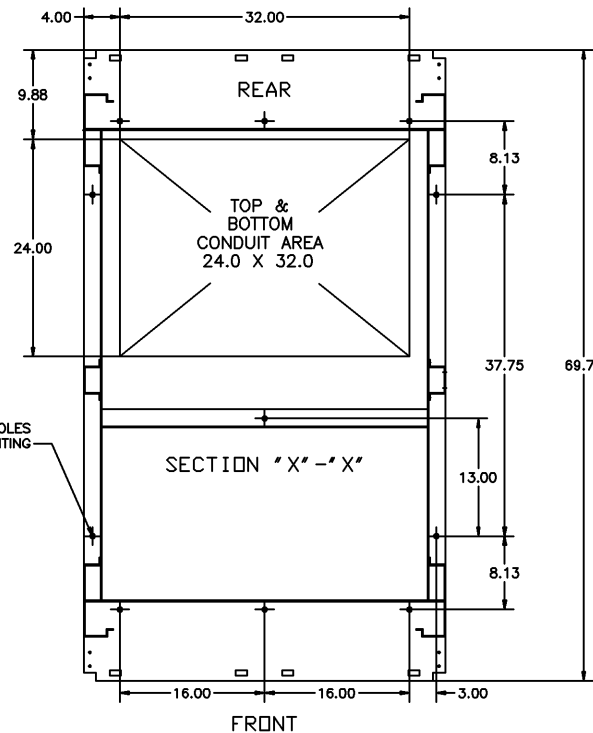
"FRONT VIEW WITH N3R-SKINS"



"RIGHT SIDE VIEW WITH N3R-SKINS"



"REAR VIEW WITH N3R-SKINS"



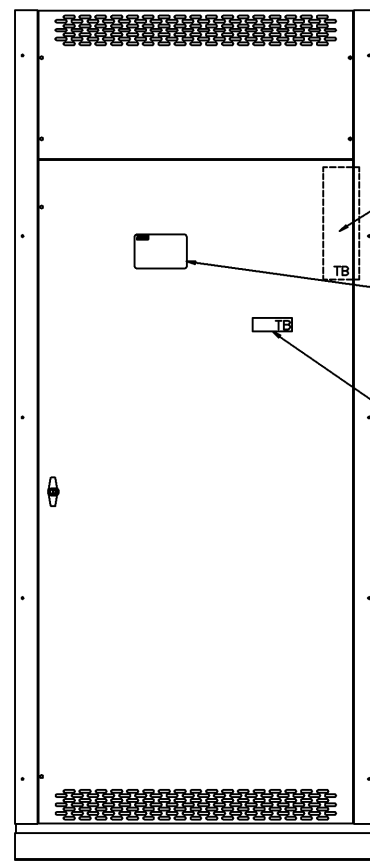
"FRONT VIEW"

"RIGHT SIDE VIEW"

F	231920	LK	RN	05/06/11
SEE ECH				
E	225162	AE	BK	11/18/09
SEE ECH				
D	222765	KH	WK	05/06/09
SEE ECH				
C	216826	KH	WK	1/24/08
SEE ECH				
B	212235	KH	BK	2/28/07
SEE ECH				
A	162806	AMS	BWM	2/4/03
SEE ECH				
-	159395	BWM	WK	11/26/01
ISSUED				

PROJECT NAME:		REV. TO SHEET	EDN NO.	BY	APP.	DATE
COMPOSITE OUTLINE						
G300/G386 SERIES TS TYPE 3R		THIRD ANGLE PROJECTION				
G 2600-3000 AMP						
BY	DATE	MANUFACTURING TOLERANCES TO BE IN ACCORDANCE WITH ASCO PROCEDURE MP-1-003. FOR PLASTIC PARTS SEE MP-1-005		ASSEM. REF. NO.		COMPUTER GENERATED DRAWING
DRAWN BY	DJB	11/28/01				SCALE 1:1 SIZE DS
CHECKED	BK	11/28/01	PROPERTY OF ASCO POWER TECHNOLOGIES. USE PERMITTED FOR OUR WORK ONLY. ALL RIGHTS OF DESIGN OR INVENTION ARE RESERVED.			DWG. NO. 725400-006
PROJECT APPROVAL	WK	11/28/01				DRAWING F
FINAL APPROVAL			ASCO POWER TECHNOLOGIES, LP. FLORHAM PARK, NEW JERSEY 07832 U.S.A.			REV. 231920 SHEET 2 OF 2

COMPOSITE OUTLINE FOR **ASCO**® SERIES (G300, G386) 2600 – 3000 AMPERE TRANSFER SWITCHES

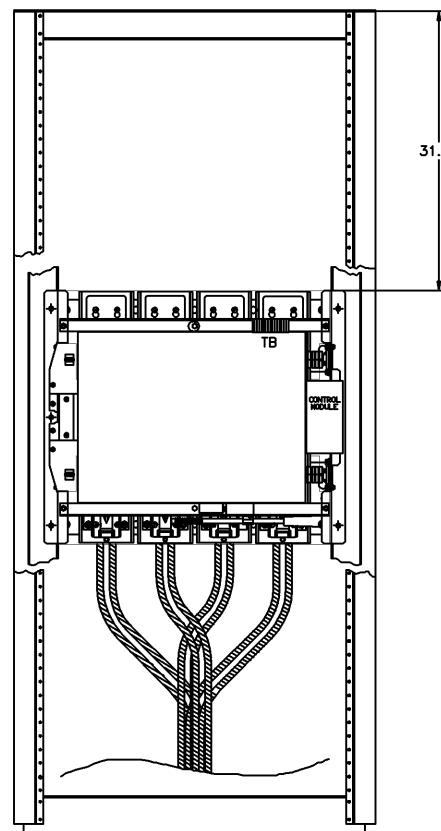


"FRONT VIEW WITH COVERS"

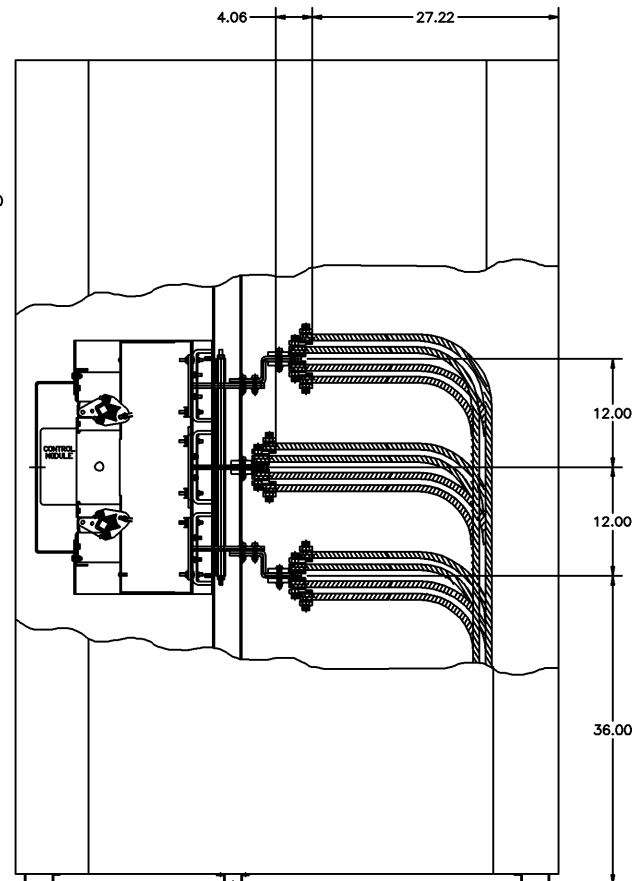
FIELD CONNECTIONS
TERMINAL BLOCK (TB)
(G386 ONLY)

USER
CONTROLS
&
INDICATORS
(MEMBRANE PANEL)

FIELD CONNECTIONS
TERMINAL BLOCK (TB)
MOUNTED ON FRONT
OF TS (G300 ONLY)



"FRONT VIEW W/O COVERS"



"RIGHT SIDE VIEW W/O N3R-SKINS"

F	231920	LK	RN	05/06/11
	SEE ECH			
E	225162	AE	BK	11/18/09
	SEE ECH			
D	222765	KH	WK	05/06/09
	SEE ECH			
C	216826	KH	WK	1/24/08
	SEE ECH			
B	212235	KH	BK	2/28/07
	SEE ECH			
A	162806	AMS	BWM	2/4/03
	SEE ECH			
-	159395	BWM	WK	11/26/01
	ISSUED			

PROJECT NAME:		REV. TO SHEET	EDN NO.	BY	APP.	DATE
COMPOSITE OUTLINE						
G300/G386 SERIES TS TYPE 3R		 THIRD ANGLE PROJECTION				
G 2600-3000 AMP						
BY	DATE	MANUFACTURING TOLERANCES TO BE IN ACCORDANCE WITH ASCO PROCEDURE MP-1-003. FOR PLASTIC PARTS SEE MP-1-005		ASSEM. REF. NO.		COMPUTER GENERATED DRAWING
DRAWN BY	DJB	11/26/01				SCALE 1:1 SIZE DS
CHECKED	BK	11/26/01	PROPERTY OF ASCO POWER TECHNOLOGIES. USE PERMITTED FOR OUR WORK ONLY. ALL RIGHTS OF DESIGN OR INVENTION ARE RESERVED.			DWG. NO. 725400-006
PROJECT APPROVAL	WK	11/26/01				DRAWING F REV. 231920 SHEET 2 OF 2
FINAL APPROVAL			ASCO POWER TECHNOLOGIES, LP. FLORENCE PARK, NEW JERSEY 07832 U.S.A.			