

OUTLINE & MOUNTING FOR ASCO® (300, 386) SERIES TRANSFER SWITCHES, RATED 230 AMPERES

GENERAL NOTES

1. TYPE 3R/4/4X/12 WALL MOUNTED ENCLOSURE.
2. STANDARD FINISH - LIGHT GREY, ANSI 61 TYPE 3R/4/12. TYPE 4X STAINLESS STEEL BODY FINISH #2B, FRONT, FINISH #3.
3. DOOR HINGED ON RIGHT SIDE. PADLOCK HASP LEFT SIDE PLATED DOOR CLAMPS (LEFT SIDE FOR TYPES 3R & 12; LEFT, TOP & BOTTOM FOR TYPE 4 & 4X).
4. TERMINALS - SCREW TYPE LUGS FOR EXTERNAL POWER CONNECTIONS.
5. THREE POLE SWITCH WITH SOLID NEUTRAL SHOWN FOR REFERENCE.
6. NEUTRAL CONFIGURATIONS:

A FULL RATED NEUTRAL CONNECTION FOR EACH SOURCE AND THE LOAD IS OPTIONAL. WHEN PROVIDED IT IS IN ONE OF THE FOLLOWING FORMATS AS SPECIFIED BY THE CATALOG NUMBER NEUTRAL TYPE:

- (A) SOLID NEUTRAL BUS (PROVIDED STANDARD ON 300)
- (B) SWITCHED NEUTRAL POLE
- (C) OVERLAPPING NEUTRAL POLE

7. CENTER OF GRAVITY.

SWITCH RATING (AMPS)	RANGE OF WIRE (COPPER)
230	(1) #14 TO 4/0 AWG

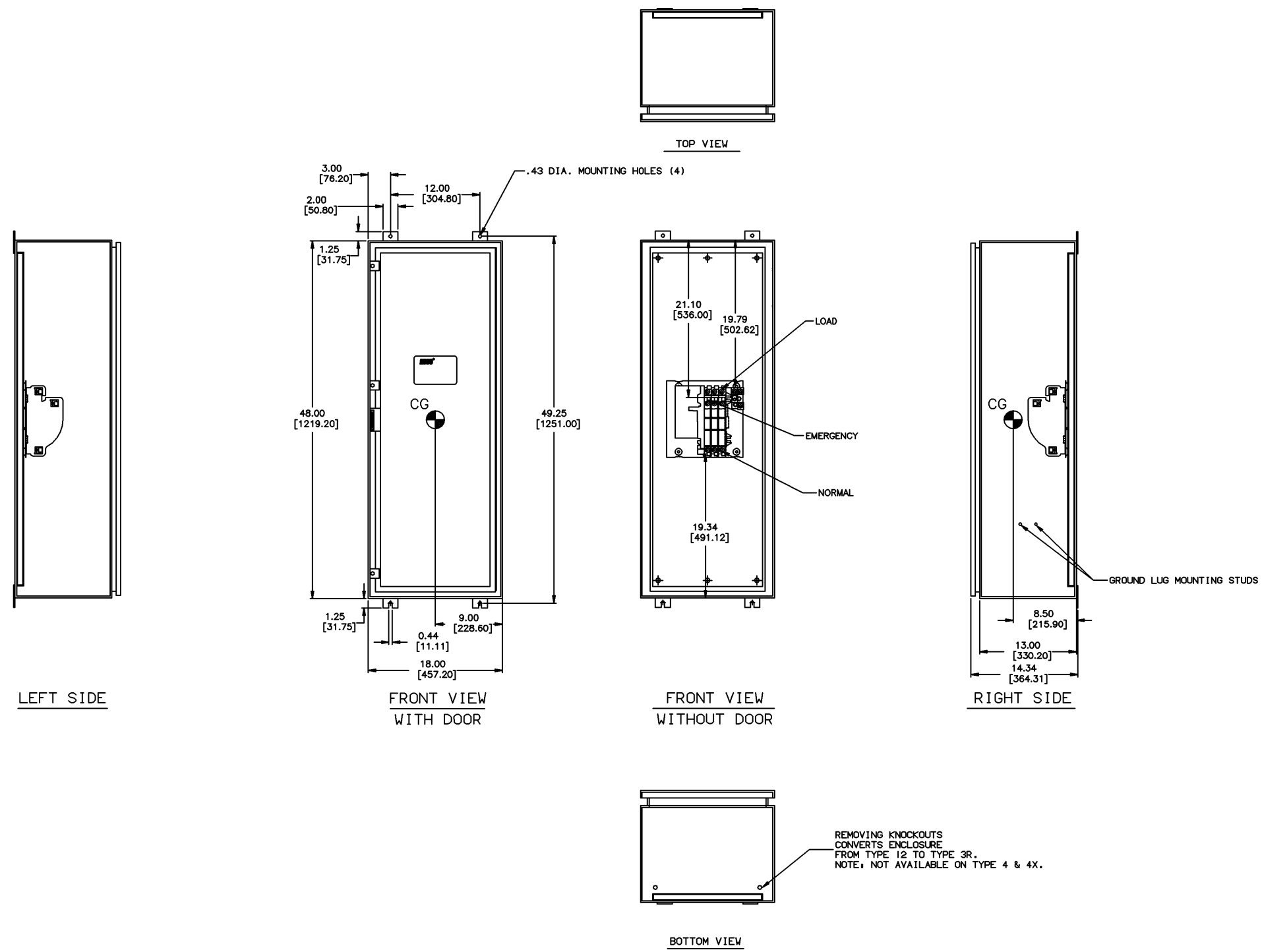
APPROXIMATE SHIPPING WEIGHT, LBS (KG)

POLES	WEIGHT
2	117 (53)
B2*	120 (54)
C2*	120 (54)
3	120 (54)
B3*	123 (56)
C3*	123 (56)

CATALOG NO. _____
 SEE ECH
TO ASCO® s.o. _____
 DATE _____ BY _____

C	213589	WK	BK	06/13/07
B	201734	TR	WK	9/14/04
A	165903	TR	WK	01/14/04
-	184494	EWM	SDH	8/03
-	ISSUED	EWN	SDH	8/03

PROJECT NAME:		REV. TO SHEET	ECH NO.	BY	APP.	DATE
OUTLINE & MOUNTING						
300-386						
230 AMPS TYPE 3R/4/4X/12						
DRAWN BY	EWM	DATE	8/03	MANUFACTURING TOLERANCES TO BE IN ACCORDANCE WITH ASCO PROCEDURE MP-1-003. FOR PLASTIC PARTS SEE MP-1-005	ASSEM. REF. NO.	COMPUTER GENERATED DRAWING
CHECKED	SDH	DATE	8/03	PROPERTY OF ASCO POWER TECHNOLOGIES. USE PERMITTED FOR OUR WORK ONLY. ALL RIGHTS OF DESIGN OR INVENTION ARE RESERVED.	SCALE	1:1 SIZE DS
APPROVAL					DWG. NO.	738647-004
					DRAWING C	ECH 213589
					REV.	1 OF 1



LEFT SIDE

FRONT VIEW WITH DOOR

FRONT VIEW WITHOUT DOOR

RIGHT SIDE

BOTTOM VIEW