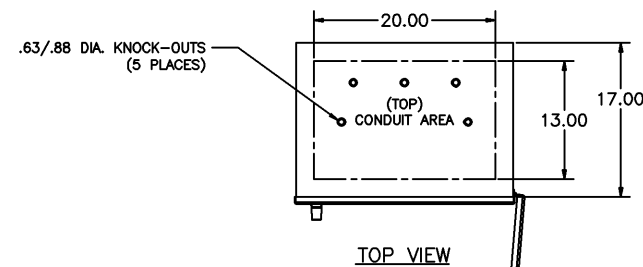
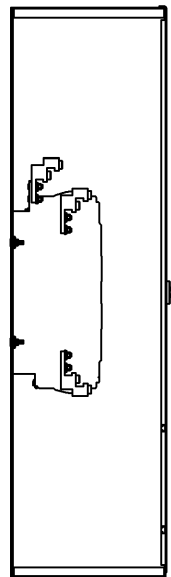


OUTLINE FOR ASCO® 150/300/386 SERIES 600 AMPERE "J" FRAME TRANSFER SWITCHES, TYPE 1 ENCLOSURE

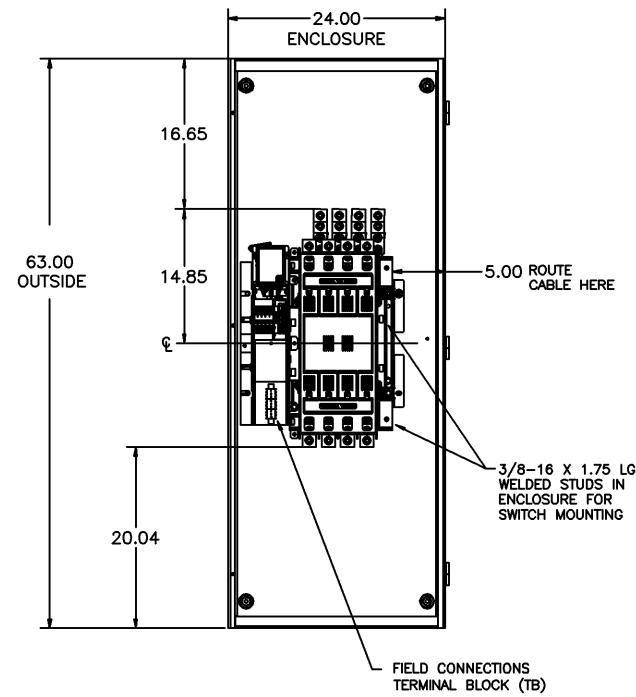


TOP VIEW

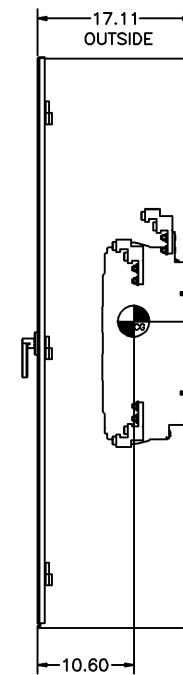
LEFT SIDE WITH DOOR



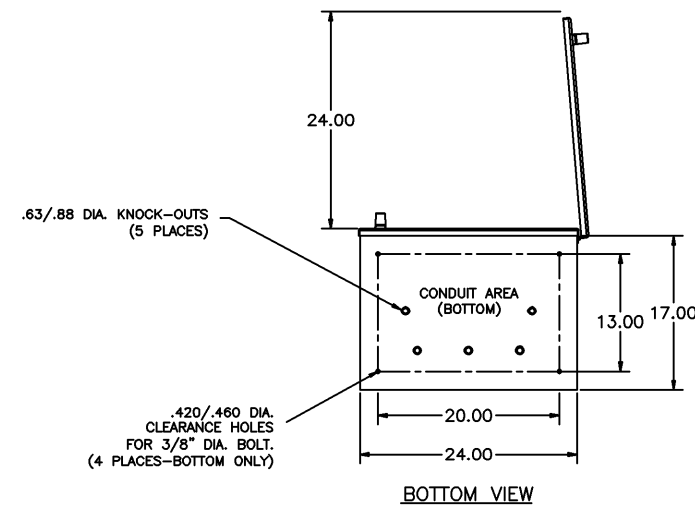
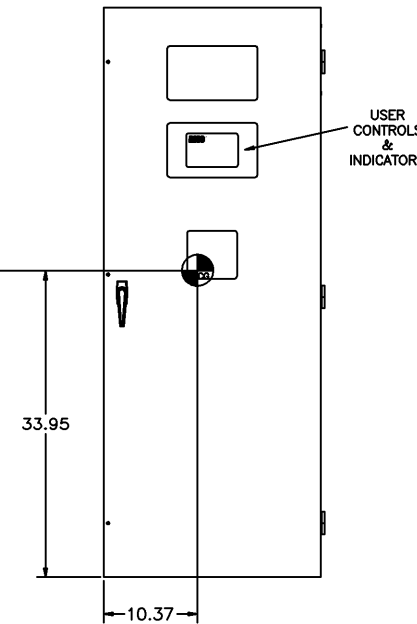
FRONT VIEW WITHOUT DOOR



RIGHT SIDE WITH DOOR



FRONT VIEW WITH DOOR



BOTTOM VIEW

GENERAL NOTES

- TYPE 1 ENCLOSURE. FREE STANDING. FLOOR MOUNTED. 12 GAUGE CONSTRUCTION.
- NEC STANDARD GAUGE PAN TYPE DOOR WITH LOCKABLE HANDLE.
- FINISH: ANSI 61 GRAY, POLYESTER POWDER STANDARD. OTHER ANSI COLORS AVAILABLE CONSULT FACTORY UL RECOGNIZED.
- RECOMMENDED CLEARANCES:
FRONT: 24 INCHES
- THE STANDARD SWITCH CONFIGURATION IS FOR EMERGENCY AND LOAD LUGS ON TOP AND NORMAL LUGS ON BOTTOM.
- A FULL RATED NEUTRAL CONNECTION FOR EACH SOURCE AND THE LOAD IS OPTIONAL. WHEN PROVIDED IT IS IN ONE OF THE FOLLOWING FORMATS AS SPECIFIED BY THE CATALOG NO. NEUTRAL TYPE;
 - SOLID NEUTRAL BUS (PROVIDED STANDARD ON J150/J300)
 - SWITCHED NEUTRAL POLE
 - OVERLAPPING NEUTRAL POLE
- CENTER OF GRAVITY.

CABLING NOTES

- ALL SIZES SUPPLIED STANDARD WITH MECHANICAL (SCREW TYPE) LUGS. (SEE AMP SIZE BELOW)
 - LUG MATERIAL: ALUMINUM ALLOY 6061-T6 WITH ELECTRO TIN PLATED FINISH.
 - SCREW MATERIAL: ALUMINUM ALLOY 6262-T9 WITH ELECTRO TIN PLATED FINISH.
 - UL LISTED, CSA CERTIFIED.
 - LUG SCREW TIGHTENING TORQUE PER UL 486B: 375 IN-LBS.
 - SUITABLE WIRE BENDING SPACE IS PROVIDED. (SEE AMP SIZE BELOW)
- CONSULT FACTORY FOR OTHER TERMINATION REQUIREMENTS.

NOTES 600 AMP SWITCHES

- SUPPLIED WITH STANDARD MECHANICAL (SCREW TYPE) LUGS ON THE NORMAL, EMERGENCY & LOAD BUS STABS. ONE (1) LUG PER PHASE AND NEUTRAL EACH SUITABLE FOR CONNECTION OF TWO (2) #2 -600MCM CU/AL CABLES.
 - SUITABLE WIRE BENDING SPACE IS PROVIDED FOR UP TO TWO (2) 600MCM CABLE PER TERMINAL PER NEC.

ATS SWITCH RATING (AMPS)	POLES	WEIGHTS LB (KG)
600	2	263 (119)
600	C2	270 (122)
600	3	270 (122)
600	C3	277 (126)
600	4	277 (126)

D	232769	BK	BK	7/11/11
SEE ECH				
C	214792	BWM	BWM	8/20/07
SEE ECH				
B	208021	JPB	JPB	3/06
SEE ECH				
A	207529	BWM	BWM	2/06
SEE ECH				
-	208077	JPB	JPB	9/29/05
ISSUED				

PROJECT NAME:		REV. TO SHEET	ECH NO.	BY	APP.	DATE
OUTLINE						
J SERIES 150/300/386 TS						
600 AMP TYPE 1						
BY	DATE	MANUFACTURING TOLERANCES TO BE IN ACCORDANCE WITH ASCO PROCEDURE MP-1-003. FOR PLASTIC PARTS SEE MP-1-005		ASSEM. REF. NO.		
DRAWN BY	JPB	9/29/05			COMPUTER GENERATED DRAWING	
CHECKED			PROPERTY OF ASCO POWER TECHNOLOGIES. USE PERMITTED FOR OUR WORK ONLY. ALL RIGHTS OF DESIGN OR INVENTION ARE RESERVED.		SCALE 1:1 SIZE DS	
TRACER APPROVAL					DWG. NO. 785025	
FINAL APPROVAL	JPB	9/29/05	ASCO POWER TECHNOLOGIES, LP. FLORHAM PARK, NEW JERSEY 07832 U.S.A.		DRAWING D ECH NO. 232769 SHEET 10F1	