

# OUTLINE & MOUNTING FOR ASCO® (150, 300, 386) SERIES TRANSFER SWITCHES, RATED 225, 260, & 400 AMPERES

## GENERAL NOTES

1. TYPE 1 WALL MOUNTED ENCLOSURE.
2. STANDARD FINISH - LIGHT GREY, ANSI 61.
3. KEY LOCKABLE HANDLE.
4. SINGLE DOOR HINGED ON RIGHT.
5. TERMINALS - SCREW TYPE LUGS FOR EXTERNAL POWER CONNECTIONS.
6. THREE POLE SWITCH WITH SOLID NEUTRAL SHOWN FOR REFERENCE.
7. NEUTRAL CONFIGURATIONS:

A FULL RATED NEUTRAL CONNECTION FOR EACH SOURCE AND THE LOAD IS OPTIONAL. WHEN PROVIDED IT IS IN ONE OF THE FOLLOWING FORMATS AS SPECIFIED BY THE CATALOG NUMBER NEUTRAL TYPE:

- (A) SOLID NEUTRAL BUS (PROVIDED STANDARD ON 150/300)
- (B) SWITCHED NEUTRAL POLE
- (C) OVERLAPPING NEUTRAL POLE

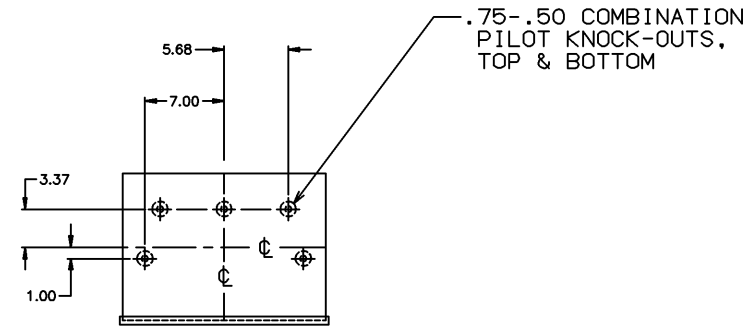
8. CENTER OF GRAVITY.

9. THE STANDARD SWITCH CONFIGURATION IS FOR TOP EMERGENCY & LOAD AND BOTTOM NORMAL. OPTIONALLY, THE SWITCH MAY BE SUPPLIED WITH REVERSE SOURCES AND/OR BOTTOM LOAD. (REFER TO THE WIRING DIAGRAM FURNISHED WITH EACH TRANSFER SWITCH TO DETERMINE TERMINATION POSITIONS).

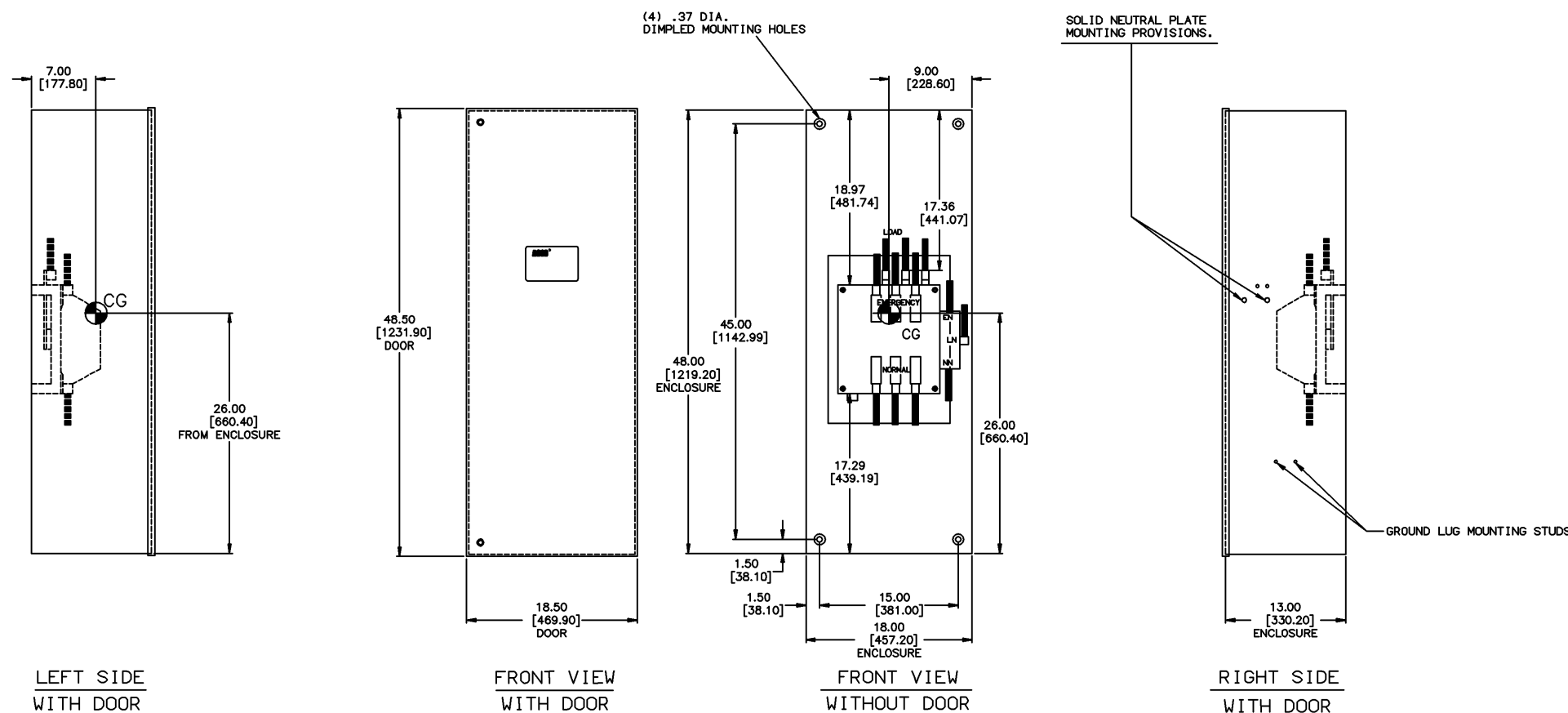
SWITCH RATING (AMPS)	RANGE OF AL-CU WIRE SIZE
225, 260, 400	(2) 1/0 TO 250 MCM AWG OR (1) #4 TO 600 MCM AWG

### APPROXIMATE SHIPPING WEIGHT, LBS (KG)

POLES	WEIGHT
2	117 (53)
B2*	125 (57)
C2*	125 (57)
3	125 (57)
B3*	NOT AVAILABLE
C3*	133 (61)



TOP VIEW  
TYP TOP & BOTTOM



CATALOG NO. \_\_\_\_\_  
**CERTIFIED**  
 TO **ASCO®** S.O. \_\_\_\_\_  
 DATE \_\_\_\_\_ BY \_\_\_\_\_

B	232767 TR BK 07/05/11
A	221042 RR BK 12/10/08
-	183185 BWM WK 3/03
-	ISSUED

PROJECT NAME: <b>OUTLINE &amp; MOUNTING</b>		REV. TO SHEET		EDN NO.	BY	APP.	DATE
150-300-386		232767					
225-400 AMPS TYPE 1		221042					
DRAWN BY: BWM		DATE: 3/03		MANUFACTURING TOLERANCES TO BE IN ACCORDANCE WITH ASCO PROCEDURE MP-1-003. FOR PLASTIC PARTS SEE MP-1-005		ASSEM. REF. NO.	
CHECKED BY: BK		DATE: 3/03		PROPERTY OF ASCO POWER TECHNOLOGIES. USE PERMITTED FOR OUR WORK ONLY. ALL RIGHTS OF DESIGN OR INVENTION ARE RESERVED.		COMPUTER GENERATED DRAWING	
APPROVED BY: WK		DATE: 3/03		SCALE: NONE		SIZE: DS	
FINAL APPROVAL		DATE		DWG. NO. <b>738647</b>		SHEET 1 OF 1	
<b>ASCO</b> ASCO POWER TECHNOLOGIES, LP. FLORHAM PARK, NEW JERSEY 07932 U.S.A.		REV. B		EDN NO. 232767			