

# OUTLINE & MOUNTING FOR ASCO® (300, 386) SERIES TRANSFER SWITCHES, RATED 30, 70, 100, 150, 200, 230 AMPERES

## GENERAL NOTES

1. TYPE 1 WALL MOUNTED ENCLOSURE.
2. STANDARD FINISH - LIGHT GREY, ANSI 61.
3. KEY LOCKABLE HANDLE.
4. SINGLE DOOR HINGED ON RIGHT.
5. TERMINALS - SCREW TYPE LUGS FOR EXTERNAL POWER CONNECTIONS.
6. THREE POLE SWITCH WITH SOLID NEUTRAL SHOWN FOR REFERENCE.
7. NEUTRAL CONFIGURATIONS:

A FULL RATED NEUTRAL CONNECTION FOR EACH SOURCE AND THE LOAD IS OPTIONAL. WHEN PROVIDED IT IS IN ONE OF THE FOLLOWING FORMATS AS SPECIFIED BY THE CATALOG NUMBER NEUTRAL TYPE:

- (A) SOLID NEUTRAL BUS (PROVIDED STANDARD ON 300)
- (B) SWITCHED NEUTRAL POLE
- (C) OVERLAPPING NEUTRAL POLE

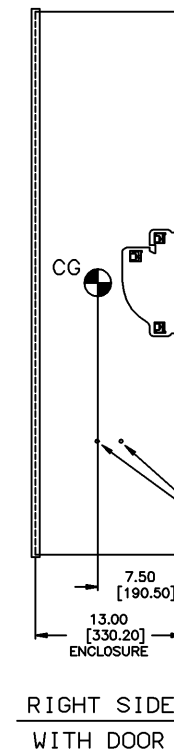
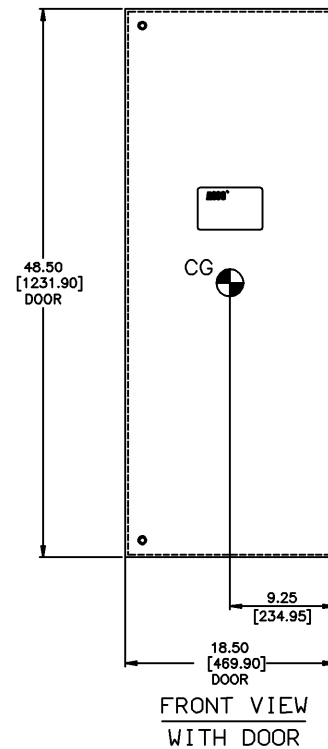
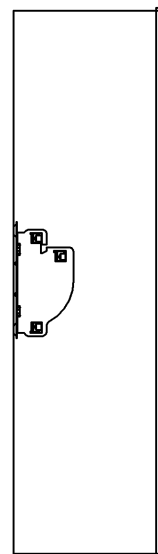
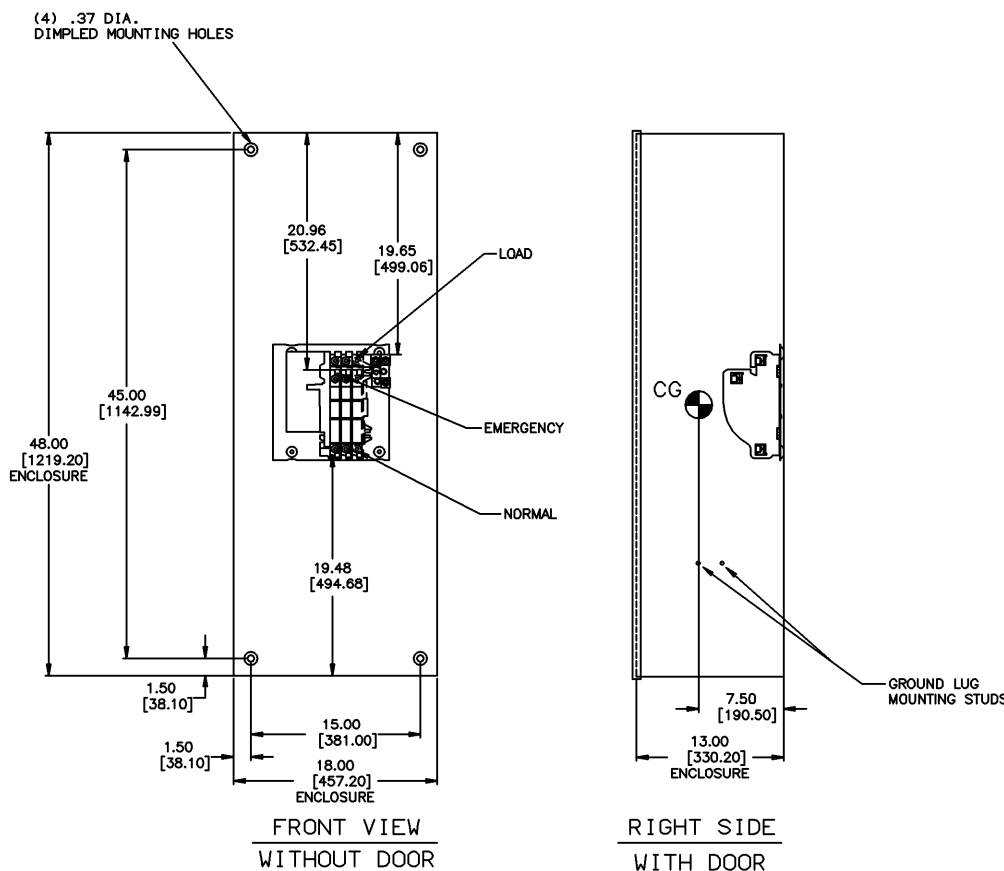
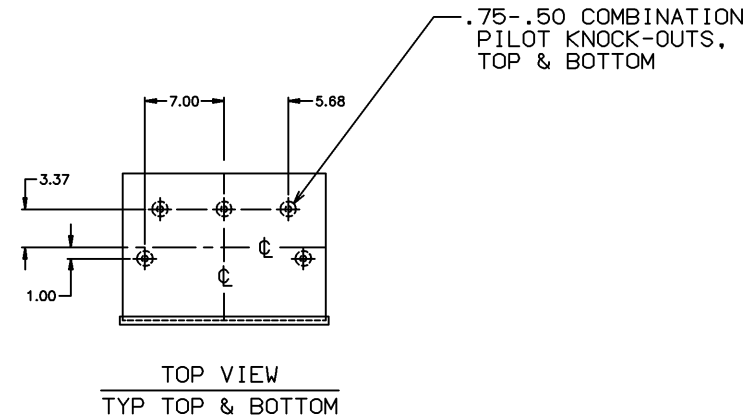
8. CENTER OF GRAVITY.

SWITCH RATING (AMPS)	RANGE OF WIRE (COPPER)
30-230	(1) #14 TO 4/0 AWG

### APPROXIMATE SHIPPING WEIGHT, LBS (KG)

AMP SIZE	POLES	WEIGHT
30-230	2	102 (46)
	B2*	105 (48)
	C2*	105 (48)
	3	105 (48)
	B3*	108 (49)
	C3*	108 (49)

\* ALPHA POLE PREFIX DESCRIBES OPTIONAL NEUTRAL POLE:  
 B=SWITCHED TYPE NEUTRAL.  
 C=OVERLAPPING TYPE NEUTRAL.



CATALOG NO. \_\_\_\_\_  
 CERTIFIED TO ASCO® s.o. \_\_\_\_\_  
 DATE \_\_\_\_\_ BY \_\_\_\_\_

B	213589	WK	BK	06/13/07
A	166451	BK	BK	3/04
-	164494	BWM	SDH	7/03
-	ISSUE			

PROJECT NAME:		REV. TO SHEET	EDN NO.	BY	APP.	DATE
OUTLINE & MOUNTING		THIRD ANGLE PROJECTION				
300-386 230 A TYP 1 PRIMARY		COMPUTER GENERATED DRAWING				
30-200 AMPS OVERSIZED		SCALE 1:1		SIZE DS		DWG. NO.
DRAWN BY BWM		DATE 7/03		ASSEM. REF. NO.		738647-003
CHECKED SDH		DATE 7/03		PROPERTY OF ASCO POWER TECHNOLOGIES. USE PERMITTED FOR OUR WORK ONLY. ALL RIGHTS OF DESIGN OR INVENTION ARE RESERVED.		DRAWING REV.
FINAL APPROVAL		ASCO POWER TECHNOLOGIES, LP.		FLORHAM PARK, NEW JERSEY 07932 U.S.A.		SHEET 1 OF 1